

PLAISTOW & IFOLD

PARISH COUNCIL



MAY 2022

ISSUE 03

IN THIS ISSUE

PLATINUM JUBILEE

SESSILE OAK TREE

PROJECT UPDATES

NEIGHBOURHOOD
PLAN



The Big Jubilee

Vintage & Royal Themed Picnic Event

Sunday 5th June 2022

Plaistow Village Green

Free admission—bring a picnic

10am Vintage and Classic Vehicle Display at Kelsey Hall, Ifold

11.30am Vehicle procession departs for Plaistow Green

12.15pm Church Service in the Marquee on the Green

1pm Event Opening & Tree Through Time Dedication

1.30pm Celebration Cake & Drinks for Residents aged 80+

2pm & 2.30pm Handbell Ringers in Winterton Hall

2.15pm Live Band—"Orange"

3pm Judging of Children's Fancy Dress Competition

3.15pm Quiz Results

4pm Live Band "Orange" followed by finale of patriotic songs

LICENSED BAR (bring your own picnic glasses)

FLOWER SHOW & HISTORY DISPLAY IN PLAISTOW CHURCH

TEA & CAKES IN WINTERTON HALL FROM 2PM

Come dressed for the occasion!. Prize for the best themed picnic 'table'

How to Contact the Parish Council

01403 871 652

clerk@plaistowandifold.org.uk

www.plaistowandifold-pc.gov.uk

The Queen's Platinum Jubilee

Plaistow and Ifold Parish Council are honoured to be hosting two events in celebration of Her Majesty The Queen's Platinum Jubilee.

You are invited to come together on 2nd June to participate in an official national event to mark this unique milestone in our history. The Parish will join with over 1,500 communities within the United Kingdom and UK Overseas Territories, and light a specially commissioned beacon on Plaistow Village Green at approximately 8:45pm. The congregation will raise a toast to Her Majesty The Queen in celebration of her 70th year as our Monarch and Head of the Commonwealth.

The Parish's Big Jubilee Vintage and Royal Themed Picnic will take place on Sunday 5th June, between 12pm - 5pm, on Plaistow village green. Bring your own picnic and gazebo! The day's celebrations will begin at the Kesley Hall in Ifold at approximately 10:30am. Classic Cars will assemble prior to their procession to Plaistow at 12 noon along with family activities and refreshments.

A family church service, led by our Vicar Rev Clive Jenkins, will take place on the village green at approximately 12:15. The day's highlights will include live music, flower display, history exhibition, handbell ringers, a royal quiz, and licensed bar. The Guest of Honour will officially dedicate the Tree Through Time to Her Majesty The Queen and judge the children's fancy dress competition.

**THE QUEEN'S
PLATINUM JUBILEE 2022**

**Platinum Jubilee
Ceremonial Beacon
Lighting**

**Thursday 2nd June
8.30pm
Plaistow Village Green**

**TOWN CRYER
COMPLEMENTARY DRINK
PATRIOTIC SING-A-LONG**

Children of all ages are invited to dress up as Kings, Queens, Princes, and Princesses - if you are a child at heart, then this is the competition for you! Enjoy designing and planning your spectacular outfit now!

Are you 80 years or over? Or perhaps you know someone who is? You are cordially invited to join together in the VIP area to enjoy a slice of Jubilee celebration cake, a glass of Champagne and reminisce about the excitement of the Queen's ascension to the throne in 1952 and coronation in 1953.

We look forward to warmly welcoming you on 5th June.

For more information, please follow the event's page on the Parish Council's website:

<https://plaistowandifold-pc.gov.uk/platinum-jubilee>



IFOLD STARTS THE CELEBRATIONS
OF THE



SUNDAY 5TH JUNE, 10.30 - 12 NOON
AT KELSEY HALL

BRITANNIA BREAKFAST BAPS
CLASSIC CARS
FREE CHILDREN'S ACTIVITIES
MUSIC



“Re-wilding” area under ‘Old Man Cecil’

In 2021, the Parish Council’s Arboriculturalist Consultant dated the Sessile Oak, situated on the Plaistow village green, from at least the 1650s. Ground compaction around ‘Old Man Cecil’s’ roots, caused by mowing and walking, is causing the tree to suffer. Therefore, following advice, the area has been ‘fenced off’ and allowed to naturalise to safeguard the tree for future generations.

The Parish wide public consultation, conducted in June 2021, demonstrated strong support for ‘re wild’ areas.

A low fence has been erected and the area will be left to ‘re wild’, creating wonderful habitat, with gentle management, directed by professional advice. The national charity Butterfly Conservation, who are working within the Parish to support the rare Wood White Butterfly, is supportive of the project. The roadside hedge will be repaired. It is anticipated that the area will be used by the schools for bug hunting and other art and natural science projects and enjoyed by the community.

The area will be dedicated to Her Majesty the Queen in honour of her Platinum Jubilee and in recognition of her love and understanding of trees and nature.

An engraved plaque will be unveiled by the Guest of Honour during the community celebrations on 5th June.



Two Councillor Vacancies

The Parish Council is a Local Authority - the first tier of governance. Councillors are democratically elected to represent residents and provide services to meet local needs. Councillors are community leaders who work together to make decisions on behalf of the people they serve.

Would you like to see the community change for the better, because of decisions you have helped make?

Parish Councils have wide ranging powers, such as crime prevention, managing open spaces, campaigning for and delivering better services and facilities, street lighting, bus shelters, car parks and planning matters, to name a few!

Your eleven Councillors meet on the second Wednesday of the month. All Parish Council meetings are open to the public and press. The Parish Council alternates between the Kelsey Hall in Ifold and the Winterton Hall in Plaistow. Meetings usually last for two hours, depending on the agenda.

To find out more, please visit the Council's website, or contact the Clerk for an informal chat.

Quiz

Hello, Cllr. Doug Brown here again with another one of my quizzes. 'Frame builder' - to score the points on the coloured ball questions you must answer the preceding red ball question. In other words, you must 'pot a red' before you pot a colour.

You'll find the answers as well as other quizzes at www.plaistowandifold-pc.gov.uk/Quiz

All the best, Doug Brown (The Inn-Quizzator)

| | |
|------------------------------------------------------------|----------------------------------------------------------------------------------------------------------------------------------------|
| Red ball question: (all red ball questions are 1 point) | Which song contains the lyrics <i>I'm gonna hit the highway like a battering ram on a silver black phantom bike?</i> |
| Yellow ball question (2 points): | Which is the world's only mammal which can truly fly? |
| Red ball question: | What was the name of the department store in which <i>Are You Being Served</i> was set? |
| Green ball question (3 points): | According to mythology, which monster inhabited the Labyrinth? |
| Red ball question: | On what was the video for Culture Club's <i>Karma Chameleon</i> filmed? (apart from video tape that is!!) |
| Brown ball question (4 points): | What was the title of Alanis Morissette's 1995 album which quickly became the biggest selling album by a female artist? (at that time) |
| Red ball question: | Alexander Selkirk's four years on Más a Tierra provided the inspiration for which 18 th century novel? |
| Blue ball question (5 points): | Who was King of England from 1087 until 1100? |
| Red ball question: | Where would you find the Spirit of Ecstasy? |
| Pink ball question (6 points): | Who designed both Marble Arch and Brighton Pavilion? |
| Red ball question: | Gentoo, macaroni and rockhopper are all types of which bird? |
| Black ball question (7 points): | On what date are the Ides of March? |

Ifold Bus Stop Regeneration Project

Since 11th January, volunteers have worked under the guidance and direction of Angela Palmerton of [Natural Gardens](#) to clear the area to create as much open space as possible for wildflowers to thrive and build safe pedestrian access, away from the road, through to where the new timber bus shelter is to be built.

Phase One included the decommissioning of the old bus shelter. The rubble was re-used on site for the base of the pathways, which offer clear access for the utility engineers, and to create 'bug hotels'. The Ifold Guides 'potted on' several hundred plug plants donated by Butterfly Conservation, who are supporting the project; and 40 sapling trees supplied by Chichester District Council as part of their '[free tree scheme](#)'. These were planted by the volunteers during Phase Two in April.

Butterfly Conservation have advised on the planting requirements for the area, not only to support the rare Wood White butterfly, but other key species such as the Brown Hairstreak and Holly Blue butterflies, and all the other pollinators and wildlife who will benefit from the area.

The project has attracted many positive comments on social media, as well as in person well-wishers who have spoken to volunteers as they have worked. Please do visit the Parish Council's website [here](#) to watch a film created about the project. Angela Palmerton provides a huge amount of information about the project and answers your questions, such as: 'Why have all the brambles been removed?' and 'What surveys were conducted at the site before work began?'

Moving forward, the area will be tended to by volunteers to prevent it from returning to a derelict overgrown state. If you would like to volunteer to support the project, or to find out more information, please contact the Parish Council: clerk@plaiستowandifold.org.uk

The new bus shelter will be built by West Sussex County Council's Communities & Public Protection Directorate Volunteer Scheme. The shelter has been sympathetically designed to emulate the local style incorporating feather edge weather board, green oak bracing, and plain clay tiled roof. To view the design, please click [here](#).



BEFORE

AFTER



Session 1 :
11/1/2022

Plaistow Traffic Safety

The [public consultation](#) undertaken in June 2021 highlighted support for the following traffic calming measure within Plaistow village:

- Changing the speed limit to 20mph along Loxwood Road
- Additional school safety signage
- Additional speed signage
- Safety crossing at the three-way junction by the Church/Sun Inn pub such as a lolly-pop person at key times
- Extension of the 30mph along Rickman's Lane

On 14th December 2021, County Councillor Duncton, the police and representatives from West Sussex County Council's (WSCC) Highways department accompanied children and their families on the 'school run' at 8:45am. This 'road safety walk-about', organised by the Parish Council, highlighted the road traffic safety issues to these key partners.

In February, the Parish Council resolved to apply to WSCC for Traffic Regulation Orders (TROs). TROs are legal documents that enable WSCC, as the local highway authority, to manage traffic in the County. The Parish Council has instructed a traffic consultant to advise and support the application process, such as conducting speed surveys, which will commence in May. Progress of these TRO applications will be included on the Parish Council's website, as well as within meeting minutes, which are published on the [website](#).

Grants

Plaistow and Ifold Parish Council's annual budget includes a sum of money for grant awards. A grant is any payment made by the Council to an organisation for a specific purpose that will benefit the Parish, or residents of the Parish, and which is not directly controlled or administered by the Council.

Any organisation wishing to apply for grant funding should visit the Council's website and submit their completed [grant application form](#) to the Clerk.

The Parish Council has supported a number of local organisations in 2021/22 including Plaistow Football Club:



"Plaistow have enjoyed a good season in the West Sussex league this year. They have lost only one fixture, and currently sit second in the table with just four games remaining. They play at the Foxfield on the edge of the village, and the club train on the new astroturf pitch at the Weald school in Billingshurst on Wednesday evenings. We are always keen for new recruits so please get in touch if you are interested.

We don't have a youth side, but we do have links with Loxwood football club who run sides for all age groups up to U16's. The U14's use the facilities in Plaistow on Saturday mornings and have had a mixed seasons so far. Details of the youth teams can be found on the Loxwood FC website.

The lease on the Foxfield is due to expire in 2025. The club are trying to negotiate a lease extension with the current owners, the Gibb's trust. Failing that we will have to try and raise a significant amount of cash in order to purchase the field, which will be a tall order. Hopefully we will be successful and push on through to our centenary in 2031."

Did You Know?

SUPPORT THE LITTER PICK

Every spring and autumn, the community gathers to clear our public spaces of the litter that has accumulated over the months, and to get our local environment looking its best for the year. Organised for many years by Sallie Baker who is handing over the high-viz jacket and litter-picker role to Cllr. David Griffiths david.griffiths@plaistowandifold.org.uk.

We would love to welcome more people in the process, and afterwards perhaps celebrate at The Sun in Plaistow. It will be happening around September/October and so there is time to get involved. Please contact David - contact detail above.

IFOLD PLAYPARK

Watch this space! The Community consultation identified the need and demand for an Ifold based Playpark. The Kelsey Hall Management Committee have provisionally agreed to host the playpark. The Parish Council is currently conducting site investigations and will launch a public consultation later in the year. Quotes will be obtained against the budget to try and make this long-standing aspiration a reality. We are happy to hear your views, and anticipate happy playpark times to come ...

SMALL ELECTRICALS & TEXTILES NEW TRIAL RECYCLE SCHEME

'West Sussex Waste Partnership' and 'Chichester recycles' have started a new trial collection service in our Community that picks up small electricals and textiles from our kerbside. This is part of a 12-month trial to make recycling easier for everyone. For more details, (and to see how it works), including the day of the collection by postcode, please visit - www.chichester.gov.uk/textileandelectricalrecycling or call 01243 534 619

There is also a coffee pod recycling service with *Podback*. See www.chichester.gov.uk/podback

DAVID RIBBENS - LOCAL COMMUNITY COUNCILLOR and SCOUT LEADER and SERVICE LEGEND

David Ribbens has been a Parish Councillor since April 1995 (so that's 27 years of council meetings!); a trustee for Community Voluntary Services for 20 years; and a Scout Leader for coming up to 60 years. After all of this service it is now retirement-time. His dedicated service for our community and supporting young people is an exemplary example to us all. We hope to celebrate more in our Autumn newsletter. For now - Thank You David.

COMMUNITY IN ACTION PHOTOS

There are lots of activities happening in the village which create many beautiful natural sights and occasions. We would like to celebrate and share these in our community. Please can you send us your best photographs or upload them to our Facebook page <https://www.facebook.com/plaistowandifold> to help bring our community in action to life.

Thank you for the photos used in this newsletter - but we would like more - and perhaps there may even be a 2023 Plaistow and Ifold Parish Council Calendar which feature our local stories in aid of our local charities. Send photos to clerk@plaistowandifold.org.uk

VIRTUAL NOTICEBOARD & PLANNING TRACKER

As well as our biannual newsletter to update you on what is happening - did you know that we have a virtual noticeboard on the Plaistow and Ifold Parish Council website? Go and have a visit - and you will see what is happening in our community - <https://plaistowandifold-pc.gov.uk/notice-board> - as well as latest information from Chichester District Council (CDC) and West Sussex County Council (WSCC).

Did you know You can identify planning applications within the Parish via the Planning Tracker on the Parish Council's website; which also has a useful map feature!

WINTERTON HALL MANAGEMENT COMMITTEE (WHMC)

Could you help support the running of the Winterton Hall by joining the committee?

The Winterton Hall is an invaluable community resource, which supports local groups and hosts many public and private functions over the year. The Hall was built in 1908 and dedicated to Edward, 5th Earl of Winterton. The Hall was conveyed to the Parish Council in 1951 and is held in trust by the Parish Council and WHMC for the use and enjoyment of the community. The WHMC are a dedicated group of volunteers committed to providing entertainment and events to raise funds to maintain and support this valuable asset. The WHMC are seeking new volunteers to carry on the good works.

Parish Council Funding

Plaistow and Ifold Parish Council is the first tier of local governance, sitting beneath Chichester District and West Sussex County Councils. However, being closest to the electorate means that the Parish Council can make a real difference within the community, by applying local taxation to address matters of local importance.

You will have seen that a percentage of your council tax, which is collected annually by Chichester District Council, goes to the Parish Council. This is called the Precept. In 2022/23 the Parish Council's Precept is £96,000 - an increase of £4,000 from 2021/22.

The amount of council tax paid is based on the banding of the property you live in (bands A - H). Nationally, band D properties are used as the benchmark for council tax. In the coming year, a band D property will pay £85.87 or, £1.65 per week towards the services and facilities the Parish Council is responsible for. This is a 7p per week increase on last year.

Your Parish Council has wide ranging powers and responsibilities. Some of the services it is responsible for include providing litter bins, the Lady Hope playpark, WIFI at the Winterton Hall, cutting the grass and providing financial support to local groups such as the two village halls, Youth Club, the preschools, and [BEAT Responders](#) to maintain the Parish's defibrillators. Unfortunately, many of the costs incurred by the Parish Council have either risen, or are set to rise over the coming months.

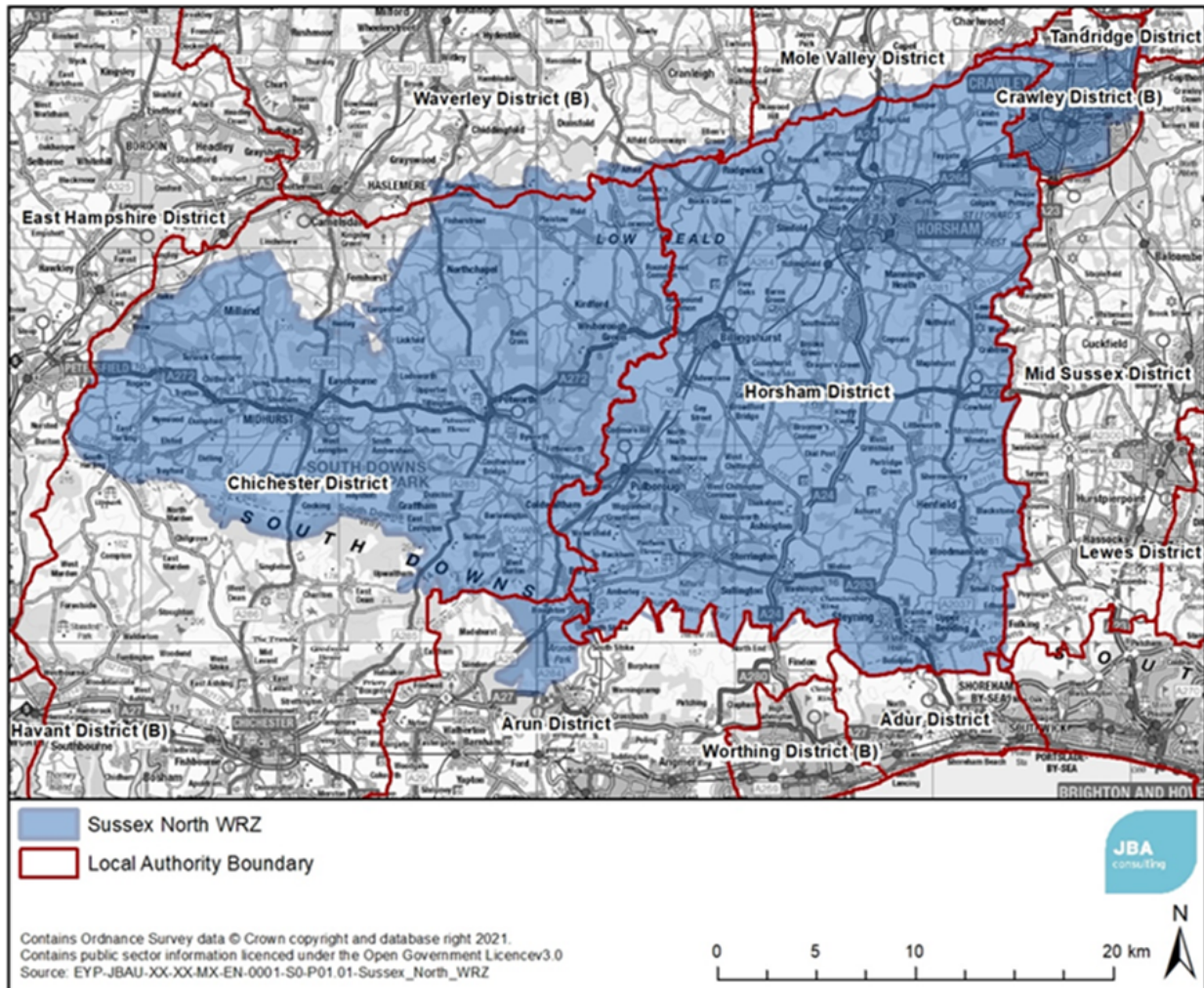
The Parish Council uses public consultations to inform decision making and direct expenditure. Look out for notices, information, and surveys, as well as meeting agendas and minutes, on our website, Facebook page, and the four Notice Boards around the Parish. The Parish Council also publish articles in the Parish News, puts up posters and contacts you via partnership working with local groups and organisations.

Some of the projects being progressed in 2022/23, which were requested and/or supported by the June 2021 public consultation, include pursuing a playpark in Ifold; addressing the traffic issues within Plaistow; providing a bus shelter in Plaistow village and safer bus stops and shelters within the wider Parish area and organising the Queen's Platinum Jubilee celebrations.

Neighbourhood Plan

On 9th February 2022, the Parish Council resolved to cease the preparation of a Neighbourhood Plan at this time. It will reconsider its position in 2023.

Since June 2021, development in the Sussex North Water Resource Zone has been impacted by Natural England's concern that existing groundwater abstraction at Hardham in Pulborough is having an impact on protected sites in the Arun Valley.



Map showing the Sussex North Water Resource Zone, from CDC's website

Hardham supplies Horsham, Crawley, and the north part of Chichester district (including Plaistow and Ifold) and some parts of the South Downs National Park.

The increasing demand for water is thought to be harming internationally protected species, with the potential threat of extinction. Consequently, Natural England has advised that new

developments within this 'zone', must not add to this impact. All new development in this area must be water neutral.

In July 2021, the Independent Neighbourhood Plan Examiner advised the Parish Council that the development aspects of the Plan could not meet the required 'water neutrality' and therefore the Plan could not move forward to Referendum. The Parish Council had to decide if it wished to withdraw the Plan from examination, or continue on the understanding that it would fail examination.

The Parish Council sought professional advice from Locality (a Central Government body supporting Neighbourhood Planning) and Chichester District Council (CDC) sought legal advice from a Planning Barrister. The Parish Council and CDC held meetings to try and identify a 'work around' solution; however, it was clear that until the wider issue is resolved by the affected Local Authorities working alongside Natural England, Southern Water and the Environment Agency, Plaistow and Ifold's Neighbourhood Plan could not move forward with any development policies.

The Parish Council considered removing all development aspects from the Plan and returning its amended Plan to the Regulation 14 public consultation stage. However, it was anticipated that it could take a further 2 years to return to Examination/Referendum stage again and there were too many uncertainties in terms of the amount of time and money to see the Plan to conclusion. Consequently, the decision was made to withdraw the Plan from examination and cease the preparation of the Neighbourhood Plan at this time.

Please refer to the Parish Council's website for full details regarding this highly complex legal matter: <https://plaistowandifold-pc.gov.uk/np>.